



UK points-based Immigration system: Employer Partner Pack



Home Office



HM Government

The way you hire from the EU has changed



Swipe up to find out more

Thank you for using the February 2021 edition of our Employer Partner pack.

Free movement ended on 31 December and the UK has introduced a points-based immigration system. The new system treats EU and non-EU citizens equally and transforms the way in which all migrants come to the UK to work. Anyone coming to the UK to work will need to apply for permission in advance except Irish citizens or EU citizens eligible for status under the EU Settlement Scheme.

To support you in providing essential guidance about the new points-based system to employers and your stakeholders, we have developed a suite of digital and print assets with information to help employers prepare.

This pack outlines our key messages and provides communication products for use on channels including social media, email updates and e-newsletters. Please do feel free to share this pack and the assets among your wider partners.

Your help and support in communicating this essential guidance is much appreciated. We hope this pack makes it as easy as possible to share updates with your audience and stakeholders through your range of digital channels.

If you have any questions or feedback, please contact us at: PBISEmployerComms@homeoffice.gov.uk



HM Government

Employers now need to be a licensed sponsor



Content

What's new:

- Social statics
- Social animations
- Right to Work employee leaflet
- Right to Work factsheet
- Employer factsheet

Also in this pack:

- Link to the PBS Employer GOV.UK page
- Podcast: Business and the future of immigration in 2021
- An introductions for employers
- Frontier workers guide
- Infographic: Overview of sponsorship process for employers

Key messages

- The way you hire from the EU has changed. You must be a licensed sponsor to hire eligible employees from outside the UK.
- Free movement has ended, and the points-based immigration system has salary and language requirements that change the way you hire from the EU.
- The system treats EU and non-EU citizens equally and transforms the way in which employers recruit from outside the UK.
- You need a sponsor licence to hire most eligible employees from outside the UK. This does not apply to Irish citizens.
- Some immigration routes, such as Global Talent, are 'unsponsored'. You don't need a licence to hire employees with an unsponsored visa.



The UK's points-based immigration system:

Employers GOV.UK page



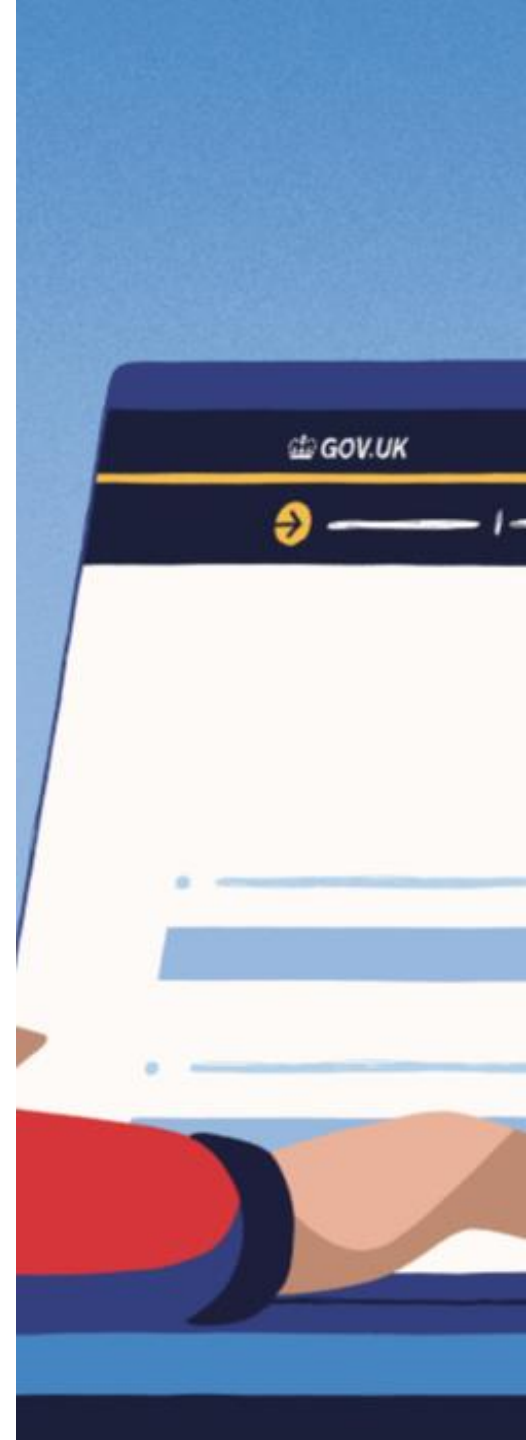
Employers should visit our dedicated GOV.UK page for the latest guidance and resources to support them with the points-based immigration system.

Please include this link when communicating about the points-based immigration system.

This can be found [here](#)



Home Office



The UK's points-based immigration system: Podcast: Business and the future of immigration in 2021



BUSINESS AND THE FUTURE OF IMMIGRATION IN 2021

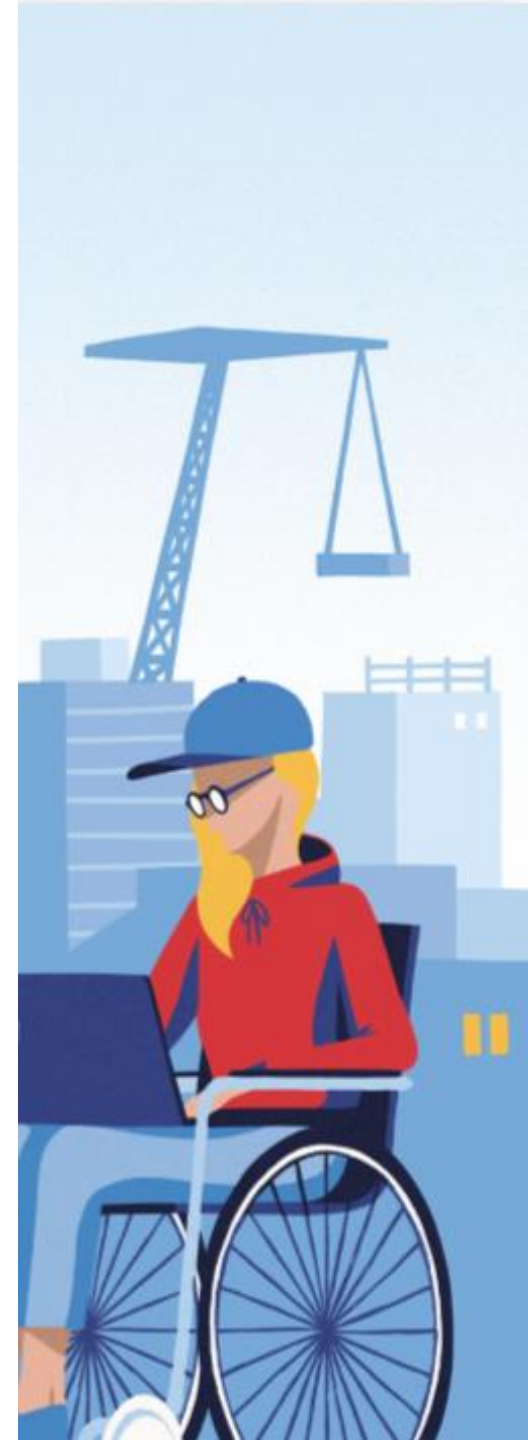
POST COPY: Listen to the Home Office's new podcast on the points-based system 'Business and the future of immigration in 2021', created in partnership with @intelligence2. Host @lindayueh is joined by Fragomen LLP's @IanRobbo123 and @fsb_policy's @emeliaquist.

In this special podcast, Home Office is joined by a panel of independent business and immigration experts for a discussion on hiring from overseas and steps businesses can take to get ready.

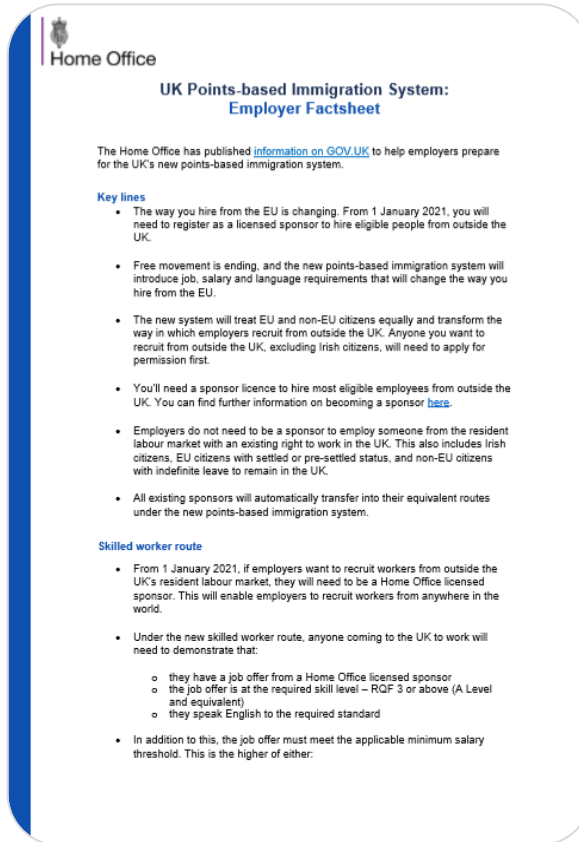
Please share this podcast, available on [GOV.UK](https://www.gov.uk), [Spotify](#) and [Apple](#), with employers for key changes and dates businesses need to look out for and the guidance on offer to steer them through the process.



Home Office



The UK's points-based immigration system: PBS Employers factsheet



The latest key lines and guidance to support you in communicating the points-based system to employers and your stakeholders.

What's new:

- Refreshed lines to reflect that the points-based system is now live.
- Right to Work links
- Frontier Workers Scheme

You may use this to crib key lines and answer frequently asked questions from your members and stakeholders.

This can be found [here](#)

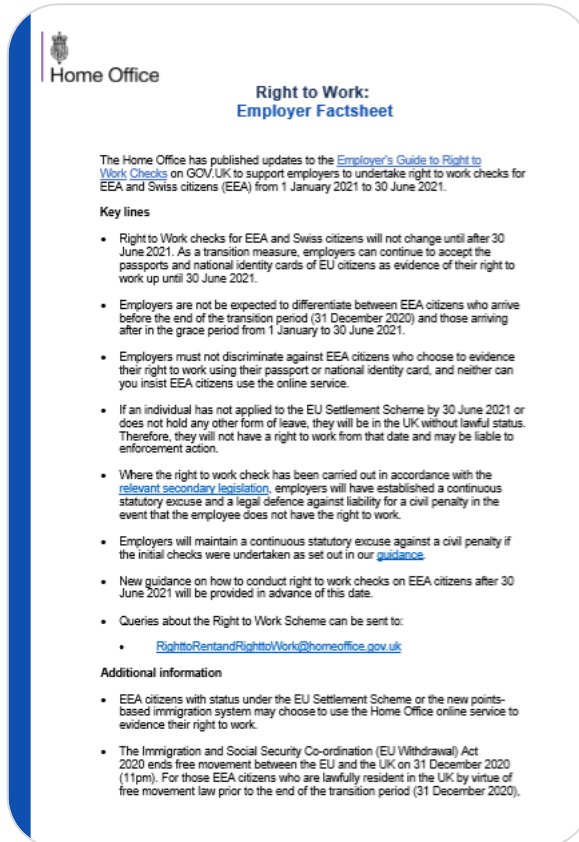


Home Office



The UK's points-based immigration system:

Right to Work: Employer factsheet



These key lines and FAQ are to support you in communicating the Right to Work process to employers and your stakeholders.

You may use this to crib key lines and answer frequently asked questions from your members and stakeholders.

This can be found [here](#)



Home Office



The UK's points-based immigration system: Understanding your right to work in the UK: EU, EEA and Swiss citizens

Guidance employers can share with EU, EEA and Swiss citizens about the Right to Work process, and their responsibilities as an individual.

Please share this guide with employers in your network to distribute amongst their EU, EEA and Swiss citizen employees.



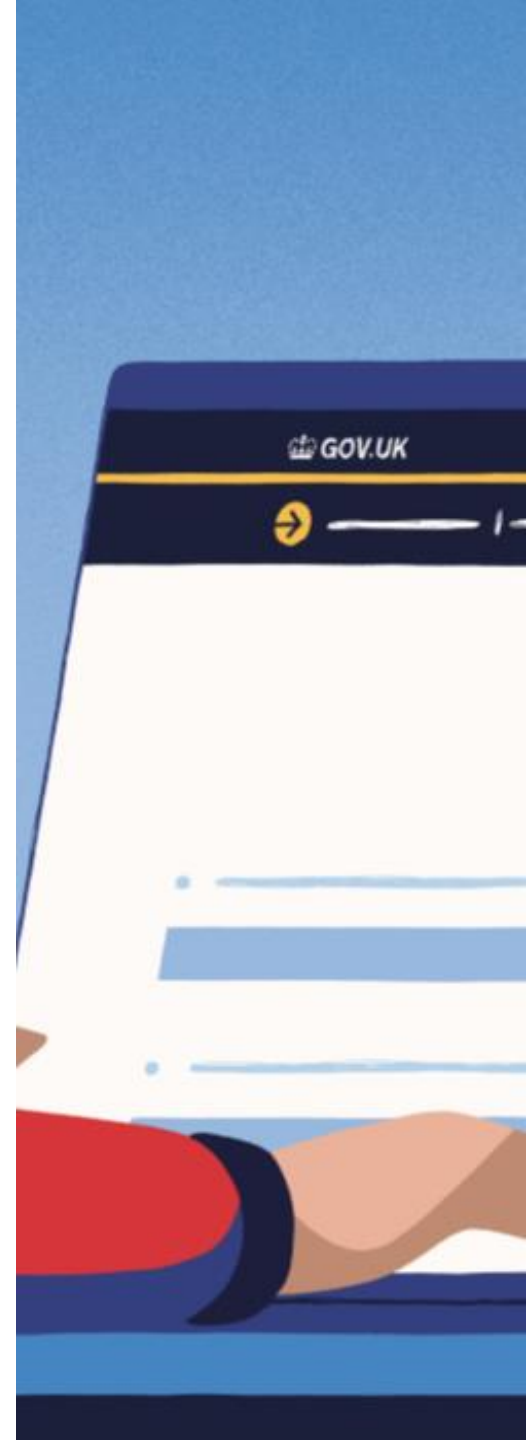
[Understanding your right to work in the UK: EU, EEA and Swiss citizens \(accessible version\)](#)



[Understanding your right to work in the UK: EU, EEA and Swiss citizens](#)



Home Office



The UK's points-based immigration system: An Introduction for employers

**Guidance on the points-based immigration system
for employers.**

**Please share this guide with employers in your
network for detailed information on the sponsorship
process, eligibility requirements and fees.**



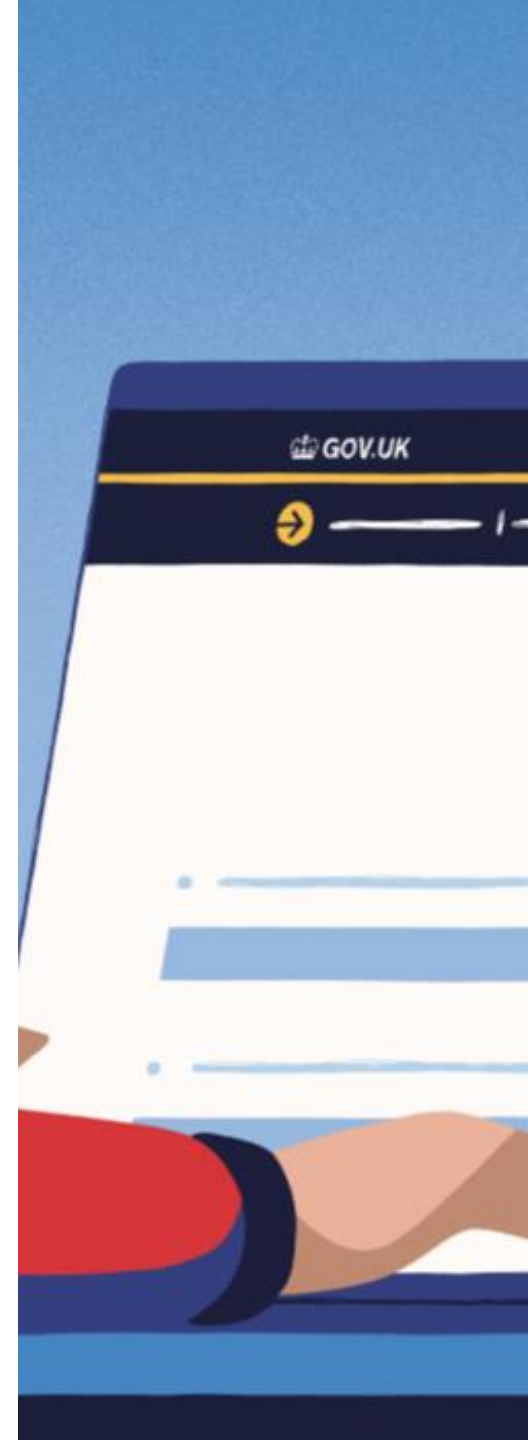
[The UK's points-based immigration
system: an introduction for employers
\(accessible version\)](#)



[The UK's points-based immigration system: an
introduction for employers](#)



Home Office



The UK's points-based immigration system: Frontier worker permit for EU citizens

This guide provides you with information on the frontier worker permit scheme. A frontier worker is an EU citizen who commutes into the UK for work but lives elsewhere.

Please share this guide with employees or eligible individuals to help them apply



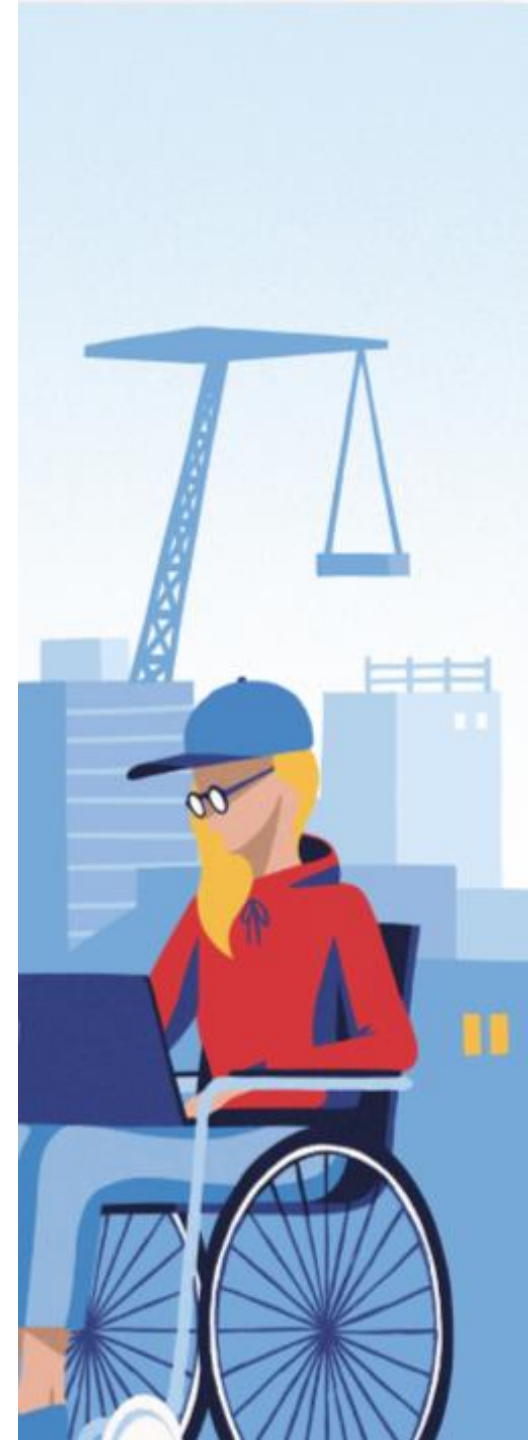
[Frontier worker permit for EU citizens \(accessible version\)](#)



[Frontier worker permit for EU citizens](#)



Home Office



The UK's points-based immigration system: Employers guide to becoming a licensed sponsor of skilled migrant workers



Overview of the sponsorship process for employers.

Please use this to provide employers with a guide to the process; from applying for a sponsor licence to hiring a new employee from outside the UK.

This can be found [here](#)



Home Office



The UK's points-based immigration system: Social statics: Facebook, Instagram and LinkedIn

A suite of digital assets to support you in communicating about the new points-based system.

Please use these assets when communicating to your members on social media, via e-newsletters or HTML platforms.

POST COPY: You must be a licensed sponsor to hire eligible employees from outside the UK. Find out more at [GOV.UK/HiringFromThe EU](https://gov.uk/HiringFromTheEU)

These can be found [here](#)



Home Office



The UK's points-based immigration system: Social animations: Facebook, Instagram and LinkedIn

A suite of digital animations to support you in communicating about the new points-based system.

Please use these short animations when communicating to your members on social media, via e-newsletters or HTML platforms.

POST COPY: You must be a licensed sponsor to hire eligible employees from outside the UK. Find out more at [GOV.UK/HiringFromTheEU](https://gov.uk/HiringFromTheEU)

These can be found [here](#)



Home Office

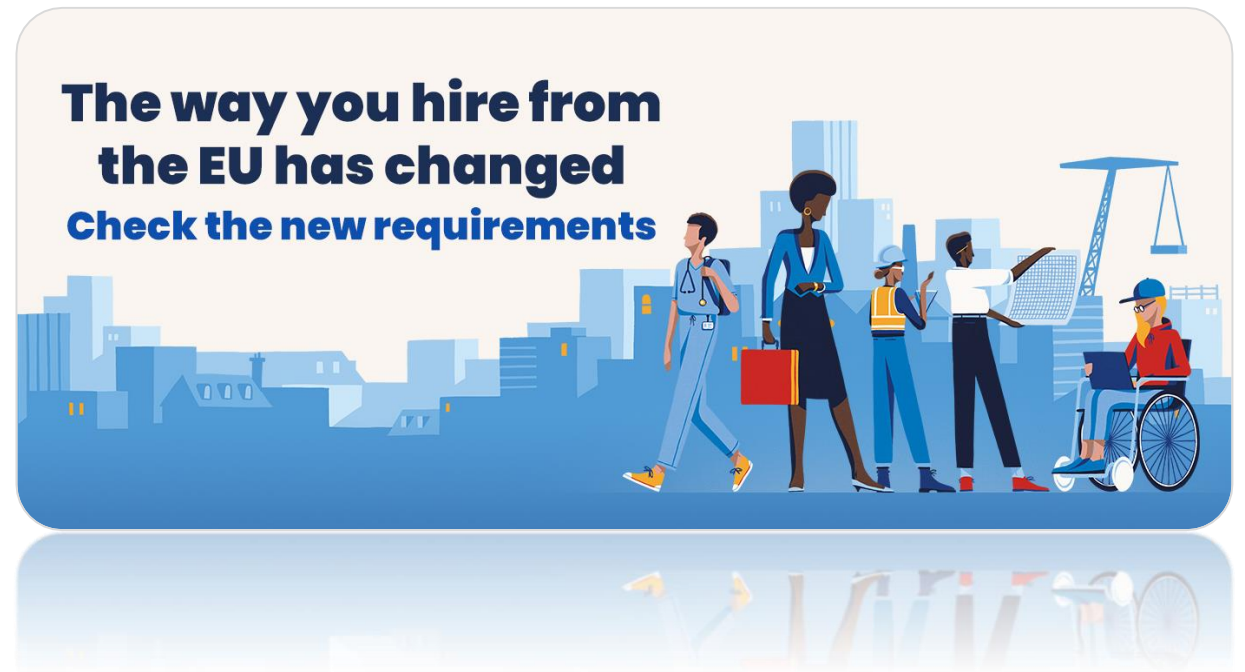


The UK's points-based immigration system: Digital banner

Digital banner to be used on members' hubs, bulletins, social media cover photos and websites to encourage employers to visit [GOV.UK](https://gov.uk)

Please use the banner on any suitable platform for communicating about the points-based immigration system to employers.

These can be found [here](#)



Home Office

The UK's points-based immigration system: Digital assets available for devolved nations

A suite of digital assets (statics and animations)
with branding for:

- [Northern Ireland](#)
- [Scotland](#)
- [Wales](#)

Please use these assets when communicating to
your members on social media, via e-newsletters
or HTML platforms.

POST COPY IN WELSH: Mae angen i chi fod yn
noddwr trwyddedig i gyflogi gweithwyr
cymwys o'r tu allan i'r DU.
[GOV.UK/HiringFromTheEU](https://gov.uk/HiringFromTheEU)



Home Office



Thank you.

If you have any questions or feedback, please contact us at: PBISEmployerComms@homeoffice.gov.uk



Home Office